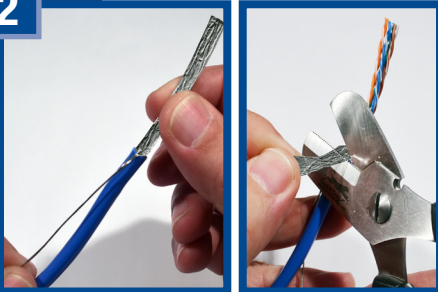


1



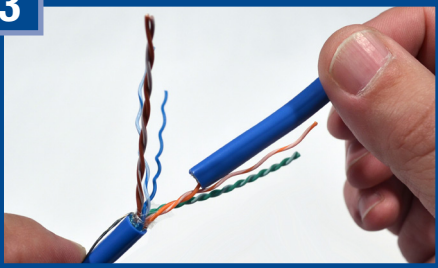
Cut cable to needed length. Remove the outer jacket of the cable using the Cable Pro™ PS-NET Cable Prep Tool. Place the tool approximately 1.5" from end of the cable. Rotate tool at least twice around the cable, both clockwise and counter-clockwise. That will score the jacket allowing you to remove it without damaging the conductors inside the jacket.

2



Pull the drain wire back over the outer jacket and wrap it around the cable. Trim off the aluminum shield and the clear plastic sleeve even with the end of the jacket. Pull on the separator to stretch it then cut it even with the end of the jacket being careful to not nick the conductors.

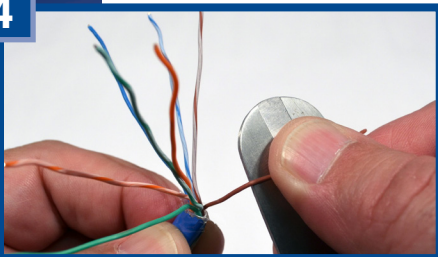
3



Untwist and separate all of the conductor pairs.

TIP: Use the jacket that was just removed and feed each conductor down the jacket to untwist it. Bonded twisted pair cable can be separated using a 1797B cable separator.

4



Use the outer edge of the cable scissors to straighten conductors. Using gentle pressure (to avoid damage to the conductors), put each conductor between thumb and edge of cutter and pull up from outer jacket to end of the conductor.

5

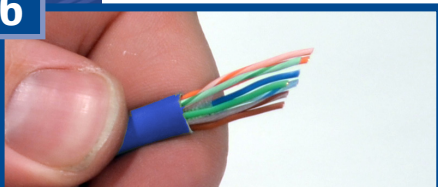


Arrange the conductors in the order shown:

1. White/Orange
2. Orange
3. White/Green
4. Blue
5. White/Blue
6. Green
7. White/Brown
8. Brown

Note: Wiring instructions for 568B method.

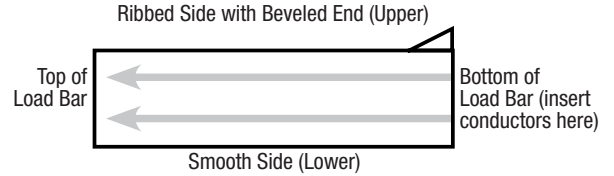
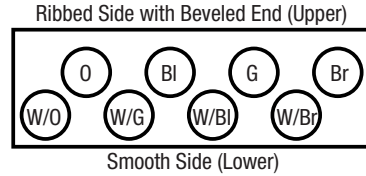
6



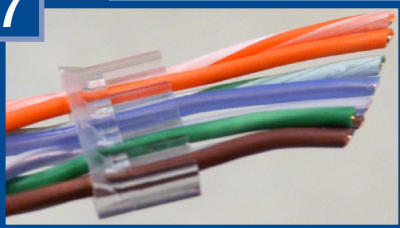
Bring the sorted conductors together, holding between the thumb and forefinger. Cut the conductors at an approximately 45° angle, with the shortest conductor extending at least one inch from the end of the jacket. This will allow for easier insertion into the load bar.

Installation Instructions for an RJ45 Modular Plug on CAT6 Cable (Shielded)

Figure A.

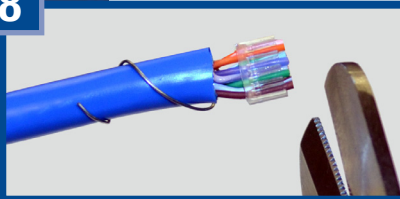


7



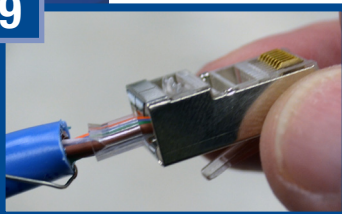
With the angled bottom edge of the load bar facing you, insert the white/orange conductor into the first lower position on the left (See Figure A). Then insert the remaining conductors in order from left to right. After all conductors are inserted into the load bar, re-check the order sequence.

8



Slide the load bar down to the base of the conductors as close to the outer jacket as possible. Cut the conductors evenly at the top of the load bar. Flatten the end of the jacket with a pair of needle-nose pliers to allow the plug to slide over the end of the jacket.

9



Insert the load bar assembly into the plug. Hold the plug with copper contacts up and the angled bottom edge (ribbed side) of the load bar facing you. Make sure the drain wire is wrapped around the jacket underneath the back of the plug prior to crimping in order to complete the ground.

10



Crimp the plug using the Cable Pro™ CPRJ11-45 Crimp Tool. Place the plug into the crimp tool and squeeze handles tightly. The copper splicing tabs on the plug will pierce into each of the eight conductors. The locking tab will cinch onto the outer jacket of the cable.

11



Remove plug from tool. Check conductor sequence and ensure outer jacket is inside the plug and secured by the locking tab. Trim drain wire just below entry into plug.

12



Repeat steps for other end of cable. Then use a cable tester to ensure proper installation of plugs.